



# BANK OF TANZANIA

## **CONSOLIDATED ZONAL ECONOMIC PERFORMANCE REPORT FOR THE QUARTER ENDING SEPTEMBER 2021**

**Volume 6 No. 3**



*Consolidated Zonal Economic Performance Report*

## **BANK OF TANZANIA**

# **CONSOLIDATED ZONAL ECONOMIC PERFORMANCE REPORT FOR THE QUARTER ENDING SEPTEMBER 2021**

© Bank of Tanzania.

All rights reserved. This report is intended for general information only and not to serve as financial or other advice. No content of this publication may be quoted or reproduced in any form without fully acknowledging the Bank of Tanzania Consolidated Zonal Economic Performance Report as the source. The Bank of Tanzania has taken every precaution to ensure accuracy of information and therefore, shall not be liable to any person for inaccurate information or opinion contained in this publication.

For any inquiry please contact:  
Director of Economic Research and Policy  
Bank of Tanzania, 2 Mirambo Street 11884 Dar es Salaam  
Telephone: +255 22 223 3328/9  
Email: botcommunications@bot.go.tz

*This report is available in PDF at: <http://www.bot.go.tz>*

*ISSN 2546-2008*



Consolidated Zonal Economic Performance Report

## Contents

<b>Executive Summary</b> -----	<b>3</b>
<b>1.0 ECONOMIC DEVELOPMENTS</b> -----	<b>5</b>
1.1 Inflation Developments-----	5
1.2 Wholesale Prices of Food Crops-----	6
1.3 Fuel Prices-----	7
<b>2.0 FOOD SUPPLY SITUATION</b> -----	<b>8</b>
2.1 Food Stock-----	9
<b>3.0 SECTORAL PERFORMANCE</b> -----	<b>10</b>
3.1 Agriculture -----	10
3.2 Manufacturing-----	13
3.3 Mining-----	15
3.4 Tourism-----	17
3.5 Energy -----	19
<b>4.0 GOVERNMENT REVENUE PERFORMANCE</b> -----	<b>21</b>
4.1 Central Government Tax Revenue -----	21
4.2 Local Government Revenue Collection -----	22
<b>5.0 TRADE</b> -----	<b>23</b>
5.1 Cross Border Trade-----	23
5.2 Ports Performance -----	24
<b>6.0 FINANCIAL SECTOR DEVELOPMENTS</b> -----	<b>25</b>
6.1 Banks' Deposits and Lending-----	25
6.2 Agent Banking Transactions -----	27
6.3 Savings and Credit Cooperative Societies-----	28
<b>7.0 STATISTICAL ANNEXES</b> -----	<b>30</b>



*Consolidated Zonal Economic Performance Report*

**List of Tables**

Table 1.1: Quarterly Average Headline Inflation .....	5
Table 1.2: Average Wholesale Prices of Selected Food Crops.....	7
Table 1.3: Average Fuel Prices .....	8
Table 2.1: Stock of Food Held by National Food Reserve Agency .....	10
Table 3.1: Livestock Sold in Registered Markets .....	11
Table 3.2: Fish Sold in Registered Markets .....	12
Table 3.3: Value of Forest Products.....	13
Table 3.4: Value of Selected Manufactured Commodities.....	14
Table 3.5: Value of Selected Mineral Recovery.....	15
Table 3.6: Value of Minerals sold at Market Centers .....	17
Table 3.7: Earnings and Visitors to National Parks.....	18
Table 3.8: Earnings and Visitors to Museums .....	19
Table 3.9: Electricity and Natural Gas Production .....	20
Table 3.10: Electricity Generation by Source.....	21
Table 4.1: Tax Revenue Performance by Zone .....	22
Table 4.2: Tax Revenue Performance by Category.....	22
Table 4.3: Local Government Revenue Performance by Zone .....	23
Table 5.1: Cross Border Trade.....	24
Table 5.3: Airports Performance .....	<b>Error! Bookmark not defined.</b>
Table 6.1: Banks' Deposits.....	26
Table 6.2: Banks' Lending .....	26
Table 6.3: Percentage Share of Banks' Lending by Activity as at the end of September 2021 .....	27
Table 6.4: Agent Banking Transactions .....	28
Table 6.5: Performance of Savings and Credit Cooperative Societies.....	29



## **Executive Summary**

During the quarter ending September 2021, average headline inflation showed mixed movements across zones<sup>1</sup>. Central, Dar es Salaam, South Eastern and Southern Highlands zones recorded slowdown in inflation, while Lake and Northern zones registered increased trend. The observed decline in inflation was mainly on account of a fall in prices of some food items, including maize, rice and round potatoes. Meanwhile, increase in inflation in Lake and Northern zones was largely driven by rising prices of some non-food items under restaurants and accommodation services sub-group.

Average wholesale prices of selected food crops were lower than in the similar quarter in 2020, except those of finger millet and wheat, while fuel pump prices increased across all zones owing to a rise in oil prices in the world market following recovery of global economic activities. The recovery was largely due to relaxation of the controls that were imposed to contain the spread of COVID-19 pandemic.

Food supply was generally satisfactory during the quarter under review. The stock of food (maize, paddy and sorghum) held by the National Food Reserve Agency (NFRA) was 150,056.9 tonnes at the end of September 2021 compared with 109,767.3 tonnes at the end of similar quarter in 2020. During the quarter ending September 2021, the Agency purchased 42,673.1 tonnes of maize from farmers in the Southern Highlands and South Eastern zones. Meanwhile, the stock of food held by Cereal and Other Produce Board of Tanzania amounted to 34,090.7 tonnes at the end of September 2021.

The performance of selected economic activities improved, except mineral recovery. For instance, the value of livestock (cattle, goat and sheep) sold in registered markets recorded a growth of 28 percent due to volume and price increase mainly associated with high demand. The value of fish sold in registered markets also rose by 54.4 percent. The increase was on account of favorable weather and continued use of modern fishing tools.

The value of selected manufactured commodities increased compared with the corresponding quarter in 2020, largely supported by new establishment and increased capacity utilization. As for

---

<sup>1</sup> The Bank of Tanzania monitors economic developments at regional-level served by designated zones. The zones and representative regions are: Central zone which comprises Dodoma, Morogoro, Singida and Tabora regions; Dar es Salaam zone (Dar es Salaam region); South Eastern zone (Ruvuma, Coast, Lindi and Mtwara regions); Lake zone (Geita, Kagera, Kigoma, Mara, Mwanza, Shinyanga and Simiyu regions); Northern zone (Arusha, Kilimanjaro, Manyara and Tanga regions); and Southern Highlands zone (Iringa, Katavi, Mbeya, Njombe, Rukwa and Songwe regions).



## *Consolidated Zonal Economic Performance Report*

mining, value of mineral recovery during the quarter was lower than the similar quarter in 2020 by 10.3 percent, largely driven by decrease in recovery of gold, coal and limestone, with closure of Buzwagi Gold Mine Site contributing greatly to the slowdown in gold recovery. Similarly, minerals sold in mineral market centers declined by 6.0 percent to TZS 598.8 billion. In relation to tourism activities, there was significant improvement reflected by increase in the number of visitors and earnings from national parks increased significantly respectively following relaxation of travel restriction taken by source countries.

In respect of electricity, a total of 2,093,347.7 Megawatt hour (MWh) was generated, higher than in the similar quarter in 2020 by 9.0 percent. Similarly, production of natural gas increased by 8.9 percent to 16,051.0 million Standard Cubic Feet (MMSCF) from the volume produced in the corresponding quarter of 2020.

The Government continued to implement tax measures outlined in 2021/22 budget and other specific measures for strengthening tax revenue administration. As a result, revenue collection (inclusive of tax refunds) improved notably reaching 95.0 percent of the target. Meanwhile, Local Government Authorities revenue collection from own sources was equivalent to 99.2 percent of the period target. This outturn was partly associated with enforcement of non-tax payments and enhanced use of electronic fiscal devices.

Cross-border trade with neighboring countries continued to register trade surplus, reaching TZS 1,911.5 billion, an increase of 27.0 percent from the level recorded in the corresponding quarter of 2020. Overall, there was significant improvement in port performance. For example, Mtwara port recorded 70.8 percent increase owing to importation of liquid cargo, specifically, petroleum products, followed by Dar es Salaam port which recorded an increase of 12.2 percent partly explained by expansion of berths and dredging of the entrance channel.

Banks' deposits and loans improved during the quarter under review. Deposits mobilized by banks rose by 3.5 percent at the end of September 2021, partly associated with increased use of agent banking services and mobile banking platforms. Similarly, banks' loans to various economic activities grew by 4.2 percent. The outturn was associated with gradual recovery of economic activities after challenges of the outbreak of COVID-19 pandemic. Accordingly, about 72 percent of loans were directed to personal; wholesale and retail trade; and agriculture related activities.



## 1.0 ECONOMIC DEVELOPMENTS

### 1.1 Inflation Developments

Average headline inflation eased across all zones except for Lake and Northern zones during the quarter ending September 2021 compared to the quarter ending September 2020. In the Central, Dar es Salaam and South Eastern zones, the slowdown in headline inflation was on account of a decrease in prices of some food items, including maize, rice, beans, sorghum and round potatoes. The decline in inflation was also compounded by slowdown in prices of some items under transport, housing, and clothing and footwear sub-groups. Meanwhile, the increase in inflation in Lake and Northern zones was driven mainly by rising prices of some non-food items, especially in restaurants and accommodation services sub-group (**Table 1.1** and **Chart 1.1**).

**Table 1.1: Quarterly Average Headline Inflation**

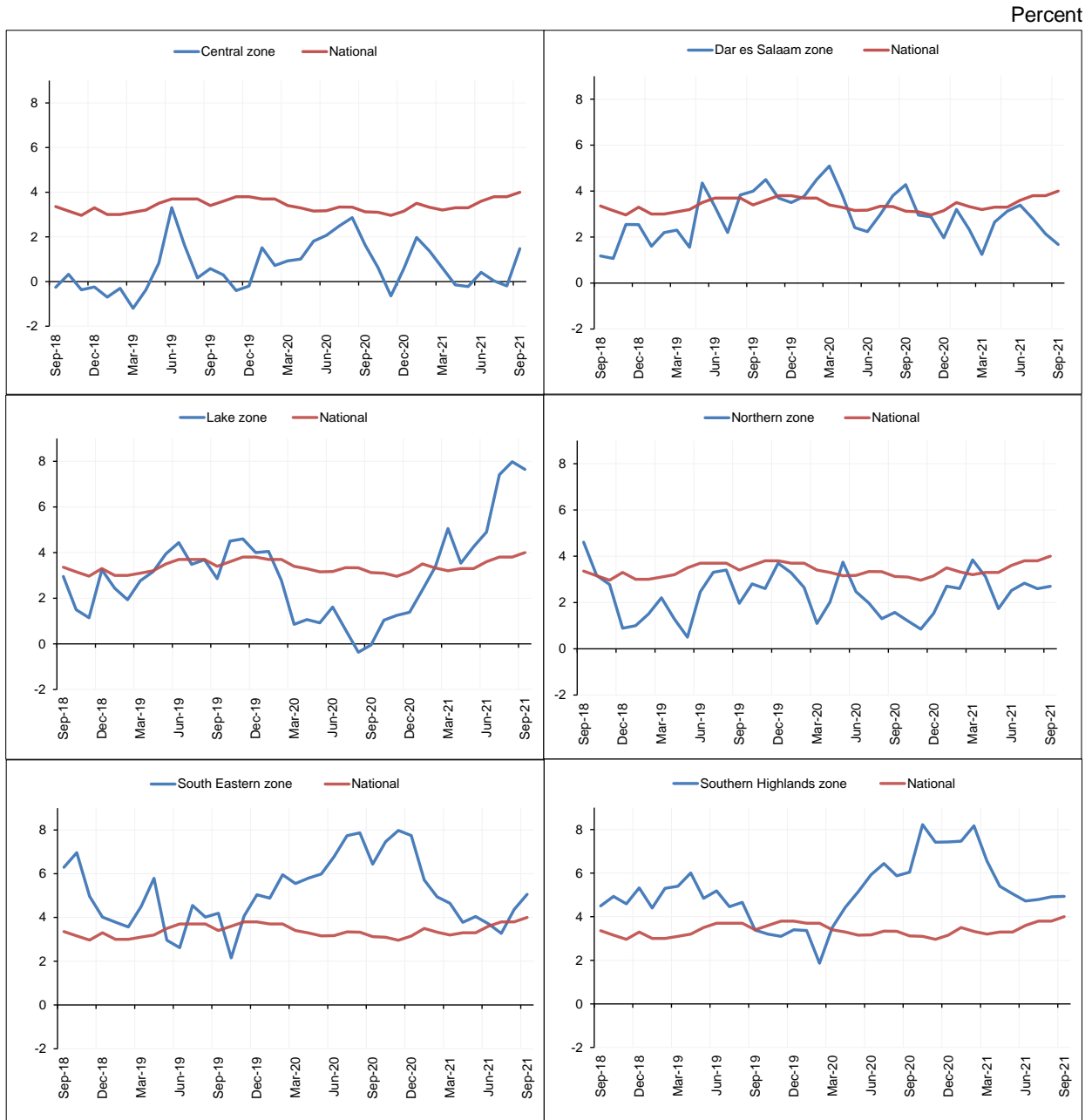
Quarter ending	National	Central	Dar es Salaam	Lake <sup>P</sup>	Northern	Percent	
						South Eastern	Southern Highlands
Sep-20	3.3	2.3	3.7	0.1	1.6	7.3	6.1
Dec-20	3.1	0.2	2.6	1.2	1.2	7.7	7.7
Mar-21	3.3	1.3	2.3	3.6	3.0	5.1	7.4
Jun-21	3.4	0.0	3.1	4.2	2.5	3.8	5.1
Sep-21	3.9	0.4	2.2	7.7	2.7	4.2	4.9

Source: National Bureau of Statistics and Bank of Tanzania computations



Consolidated Zonal Economic Performance Report

Chart 1.1: Year-on-Year Headline Inflation



Source: National Bureau of Statistics and Bank of Tanzania computations

1.2 Wholesale Prices of Food Crops

Average wholesale prices of most selected major food crops declined in comparison to the similar quarter in 2020 (Table 1.2). The decrease was on account of adequate food supply following good harvests during 2020/21 crop season and improved distribution channels.





Consolidated Zonal Economic Performance Report

**Table 1.2: Average Wholesale Prices of Selected Food Crops**

Quarter ending	Crop	TZS per 100 kg						
		Central	Dar es Salaam	Lake	Northern	South Eastern	Southern Highlands	Average
Sep-20	Beans	188,954.3	225,662.7	182,411.9	193,192.9	208,277.9	163,888.9	193,731.4
	Bulrush millet	85,951.2	95,476.2	n.a	117,199.7	n.a	n.a	99,542.4
	Finger millet	136,514.1	123,924.6	n.a	132,358.6	126,904.8	138,492.6	129,925.5
	Maize	56,325.5	59,964.5	61,303.6	58,669.7	59,889.3	50,527.2	57,780.0
	Rice	148,315.3	168,317.5	122,551.7	158,382.3	180,350.3	134,722.2	152,106.6
	Round potatoes	75,004.8	70,687.8	85,862.8	75,264.7	83,713.8	47,834.4	73,061.4
	Sorghum	97,424.6	91,553.6	100,658.1	94,007.6	128,589.7	97,217.4	102,446.7
	Wheat	163,333.3	126,613.1	n.a	123,027.5	n.a	123,281.7	124,820.3
Jun-21	Beans	192,371.6	218,087.4	164,870.4	175,359.1	201,220.3	165,944.4	186,308.9
	Bulrush millet	89,976.3	84,431.2	n.a	97,817.3	n.a	n.a	90,741.6
	Finger millet	144,239.4	156,837.1	n.a	150,784.3	171,928.3	138,160.7	155,947.3
	Maize	49,331.0	46,353.7	46,392.2	45,109.8	55,339.7	30,055.6	45,430.3
	Rice	152,791.3	163,660.3	118,497.2	152,075.8	162,650.5	132,194.4	146,978.2
	Round potatoes	70,698.5	67,714.4	80,257.9	65,604.7	72,587.5	32,944.4	64,967.9
	Sorghum	88,329.8	87,695.4	102,560.9	87,372.2	128,488.9	97,666.7	98,889.4
	Wheat	152,777.8	123,822.8	n.a	113,191.7	n.a	107,868.3	118,507.3
Sep-21	Beans	185,169.7	207,835.8	165,109.2	161,276.7	187,633.7	177,777.8	180,800.5
	Bulrush millet	76,690.0	78,897.4	n.a	98,386.5	n.a	n.a	84,658.0
	Finger millet	144,558.8	157,890.4	n.a	147,306.5	174,382.3	144,786.4	156,034.5
	Maize	40,633.4	51,610.1	52,000.5	48,806.2	47,165.7	42,111.1	47,054.5
	Rice	140,990.3	153,787.7	121,254.8	154,299.2	159,589.6	135,166.7	144,181.4
	Round potatoes	71,654.0	55,159.2	76,382.8	57,272.1	68,881.5	44,000.0	62,224.9
	Sorghum	92,600.8	83,397.4	104,840.2	88,685.6	121,116.9	80,000.0	98,128.2
	Wheat	157,182.7	129,551.3	n.a	120,822.6	n.a	117,198.9	125,186.9

Source: Ministry of Industry and Trade, Regional Authorities and Bank of Tanzania computations

Note: n.a. denotes not available

### 1.3 Fuel Prices

Average domestic retail pump prices of petroleum products were higher during the quarter under review than in the corresponding quarter in 2020, with petrol recording the highest price increase, at 33.6 percent (**Table 1.3**). The increase was explained by a rise of oil prices in the world market following recovery of global economic activities after relaxation of measures, which were imposed to control the spread of COVID-19 pandemic, coupled with tight oil supplies by major oil exporting countries<sup>2</sup>.

<sup>2</sup> These include Organization of Petroleum Exporting Countries (OPEC) and some non-OPEC oil exporters.



Consolidated Zonal Economic Performance Report

Table 1.3: Average Fuel Prices

Zone	Type	Quarter ending			Percentage change
		Sep-20	Jun-21	Sep-21	Sep-20 to Sep-21
Central	Petrol	1,869.0	2,251.1	2,475.8	32.5
	Diesel	1,846.6	2,106.5	2,296.7	24.4
	Kerosene	1,671.1	1,973.6	2,126.8	27.3
Dar es Salaam	Petrol	1,791.7	2,180.3	2,417.2	34.9
	Diesel	1,763.7	2,035.7	2,235.0	26.7
	Kerosene	1,609.3	1,924.7	2,150.2	33.6
Lake	Petrol	1,949.0	2,322.3	2,554.0	31.0
	Diesel	1,920.9	2,188.1	2,381.9	24.0
	Kerosene	1,846.0	2,220.3	2,477.0	34.2
Northern	Petrol	1,838.2	2,284.4	2,520.9	37.1
	Diesel	1,809.6	2,150.7	2,344.8	29.6
	Kerosene	2,149.0	2,273.2	2,259.3	5.1
South Eastern	Petrol	1,838.0	2,230.9	2,448.4	33.2
	Diesel	1,788.7	2,057.6	2,277.4	27.3
	Kerosene	1,921.8	2,076.6	2,285.1	18.9
Southern Highlands	Petrol	1,910.4	2,281.5	2,543.4	33.1
	Diesel	1,881.8	2,149.8	2,369.4	25.9
	Kerosene	1,738.6	2,195.0	2,331.5	34.1
Average	Petrol	1,866.0	2,258.4	2,493.3	33.6
	Diesel	1,881.8	2,149.8	2,369.4	25.9
	Kerosene	1,822.6	2,110.6	2,271.6	24.6

Source: National Bureau of Statistics

## 2.0 FOOD SUPPLY SITUATION

Food supply was generally satisfactory during the quarter under review. Going forward, there are signs of poor harvests during 2021/22 crop season owing to delays and uneven distribution of 2021/22 short rains (*vuli*) and forecasted below normal long rains (*masika*)<sup>3</sup>.

<sup>3</sup> As per Tanzania Meteorological Agency weather forecasts.



## 2.1 Food Stock

The stock of food (maize, paddy and sorghum) held by the National Food Reserve Agency (NFRA) was 150,056.9 tonnes at the end of September 2021 compared with 109,767.3 tonnes at the end of similar quarter in 2020 (**Table 2.1**). During the quarter ending September 2021, the Agency purchased 42,673.1 tonnes of maize from farmers in the Southern Highlands and South Eastern zones. Meanwhile, the stock of food held by Cereal and Other Produce Board of Tanzania which include maize, paddy, sorghum, wheat, maize flour, *kande*<sup>4</sup> and rice amounted to 34,090.7 tonnes at the end of September 2021<sup>5</sup>.

---

<sup>4</sup> Kiswahili word for hulled maize grains

<sup>5</sup> While the stock held by NFRA is meant for maintaining food reserve, the stock held by CPB is for commercial purposes.



Consolidated Zonal Economic Performance Report

**Table 2.1: Stock of Food Held by National Food Reserve Agency**

							Tonnes
Quarter ending	Zone	Opening balance	Quantity purchased	Quantity transferred in/out*	Quantity released	Closing balance	
Sep-20	Central	2,812.0	3,264.0	0.0	51.0	6,025.0	
	Dar es Salaam	3,428.5	3,707.5	0.0	0.0	7,136.0	
	Lake	4,589.5	2,421.3	0.0	137.3	6,873.5	
	Northern	5,381.7	4,915.3	0.0	0.0	10,297.0	
	South Eastern	9,705.1	13,764.7	-1,941.1	0.0	21,528.8	
	Southern Highlands	26,781.4	29,127.8	2,001.8	4.0	57,907.0	
	<b>Total</b>		<b>52,698.2</b>	<b>57,200.6</b>	<b>60.8</b>	<b>192.3</b>	<b>109,767.3</b>
Jun-21	Central	4,867.0	0.0	0.0	0.0	4,867.0	
	Dar es Salaam	7,644.5	0.0	0.0	0.0	7,644.5	
	Lake	4,589.5	2,422.4	0.0	227.1	6,784.8	
	Northern	5,381.7	4,950.0	0.0	2,749.0	7,582.7	
	South Eastern	9,705.1	14,299.8	-2,941.1	0.0	21,063.8	
	Southern Highlands	26,807.9	29,661.2	2,976.1	4.0	59,441.2	
	<b>Total</b>		<b>58,995.6</b>	<b>51,333.4</b>	<b>35.0</b>	<b>2,980.1</b>	<b>107,384.0</b>
Sep-21	Central	4,867.0	0.0	0.0	0.0	4,867.0	
	Dar es Salaam	7,644.5	0.0	0.0	0.0	7,644.5	
	Lake	6,784.8	0.0	-0.3	0.0	6,784.5	
	Northern	7,582.7	0.0	0.0	0.0	7,582.7	
	South Eastern	21,063.9	9,053.0	0.0	0.0	30,116.9	
	Southern Highlands	59,441.2	33,620.1	0.0	0.0	93,061.3	
	<b>Total</b>		<b>107,384.1</b>	<b>42,673.1</b>	<b>-0.3</b>	<b>0.0</b>	<b>150,056.9</b>

Source: National Food Reserve Agency

Note: The NFRA stock does not include the amount in transit; and \* positive number means net transfer in and negative number, net transfer out

## 3.0 SECTORAL PERFORMANCE

### 3.1 Agriculture

#### 3.1.1 Livestock

Livestock trade improved as the value of livestock sold in registered markets rose by 28.4 percent to TZS 607.8 billion from the value recorded in the corresponding quarter in 2020 (**Table 3.1**). The increase, which was largely driven by price was observed in all zones except Dar es Salaam. Cattle



Consolidated Zonal Economic Performance Report

trade remained dominant accounting for 90.6 percent of the total value of livestock sold in the markets. Regarding performance by zone, Lake zone had the largest share of 36.7 percent in value.

**Table 3.1: Livestock Sold in Registered Markets**

Quarter ending	Livestock	Unit of measure	Central	Dar es Salaam	Lake	Northern	South Eastern	Southern Highlands	Total
Sep-20	Cattle	Head	211,238.5	89,870.0	199,688.0	146,084.0	26,900.0	42,781.8	716,562.2
		Millions of TZS	114,704.3	104,582.1	90,381.9	80,875.7	14,004.2	20,942.5	425,490.6
	Goats	Head	152,385.6	42,275.0	92,212.0	135,070.6	13,744.0	10,264.0	445,951.2
		Millions of TZS	9,389.7	5,260.9	5,154.0	17,184.5	790.3	749.1	38,528.5
	Sheep	Head	44,626.4	7,409.0	30,773.0	53,485.4	2,571.0	3,826.0	142,690.8
		Millions of TZS	1,946.3	734.4	1,372.2	4,908.1	157.6	305.0	9,423.6
	<b>Total</b>	<b>Millions of TZS</b>	<b>126,040.3</b>	<b>110,577.4</b>	<b>96,908.1</b>	<b>102,968.3</b>	<b>14,952.1</b>	<b>21,996.6</b>	<b>473,442.7</b>
Jun-21	Cattle	Head	157,045.0	67,337.0	307,517.0	152,698.6	33,818.0	54,030.3	772,445.9
		Millions of TZS	100,441.6	56,463.3	142,837.2	85,823.4	20,578.4	25,522.4	431,666.3
	Goats	Head	84,438.0	52,417.0	127,475.0	146,341.9	16,636.0	21,292.0	448,599.9
		Millions of TZS	6,692.7	6,328.9	8,967.2	17,911.0	1,118.4	1,280.8	42,298.9
	Sheep	Head	21,040.0	9,104.0	55,556.0	69,596.7	1,802.0	4,805.0	161,903.7
		Millions of TZS	1,209.6	846.3	2,828.6	7,253.4	149.6	216.5	12,504.1
	<b>Total</b>	<b>Millions of TZS</b>	<b>108,343.9</b>	<b>63,638.5</b>	<b>154,633.1</b>	<b>110,987.8</b>	<b>21,846.4</b>	<b>27,019.6</b>	<b>486,469.3</b>
Sep-21 <sup>P</sup>	Cattle	Head	176,143.0	94,341.0	244,432.0	150,748.4	32,633.0	43,931.8	742,229.2
		Millions of TZS	119,776.9	77,674.1	212,068.9	98,592.0	20,442.8	22,017.6	550,572.2
	Goats	Head	99,134.0	26,832.0	105,812.0	151,640.0	14,940.0	13,161.0	411,519.0
		Millions of TZS	8,208.1	3,241.7	8,296.4	20,464.0	1,034.6	847.2	42,092.0
	Sheep	Head	47,281.0	12,593.0	51,564.0	69,717.6	1,666.0	2,452.0	185,273.6
		Millions of TZS	3,245.2	1,166.0	2,887.4	7,552.5	139.0	160.5	15,150.7
	<b>Total</b>	<b>Millions of TZS</b>	<b>131,230.1</b>	<b>82,081.8</b>	<b>223,252.8</b>	<b>126,608.5</b>	<b>21,616.4</b>	<b>23,025.3</b>	<b>607,814.8</b>
	Percentage share in total		21.6	13.5	36.7	20.8	3.6	3.8	100.0

Source: Regional Administrative Secretary Offices, Ministry of Livestock and Fisheries, and Bank of Tanzania computations

Note: p denotes provisional data

### 3.1.2 Fisheries

Fish worth TZS 166.5 billion were traded in the registered markets during the quarter, higher than in the similar quarter in 2020 by 54.4 percent. This performance was largely driven by volume increase following favorable weather and increased use of proper fishing tools. All zones recorded increase, with Lake zone representing 64.0 percent of the total value of fish sold in the markets (**Table 3.2**).



Consolidated Zonal Economic Performance Report

**Table 3.2: Fish Sold in Registered Markets**

Zone	Unit of measure	Quarter ending			Percentage change	Percentage share Sep-21
		Sep-20	Jun-21	Sep-21 <sup>P</sup>	Sep-20 to Sep-21	
Central	Tonnes	137.1	205.1	208.1	51.8	0.6
	Millions of TZS	633.9	1,057.3	1,269.3	---	0.8
Dar es Salaam	Tonnes	2,845.8	3,103.7	2,880.4	1.2	7.6
	Millions of TZS	8,361.5	9,641.1	10,560.9	26.3	6.3
Lake	Tonnes	5,603.5	4,707.3	23,654.4	---	62.5
	Millions of TZS	60,470.2	23,044.4	106,551.0	76.2	64.0
Northern	Tonnes	1,458.5	2,426.2	2,689.0	84.4	7.1
	Millions of TZS	7,565.7	8,802.3	10,278.8	35.9	6.2
South Eastern	Tonnes	4,759.3	3,733.4	4,139.5	-13.0	10.9
	Millions of TZS	17,504.2	19,594.4	22,513.4	28.6	13.5
Southern Highlands	Tonnes	3,186.6	4,253.7	4,268.5	34.0	11.3
	Millions of TZS	13,337.3	15,141.2	15,355.0	15.1	9.2
Total	Tonnes	17,990.7	18,429.3	37,840.0	---	100.0
	Millions of TZS	107,872.8	77,280.8	166,528.4	54.4	100.0

Source: Regional Administrative Secretary Offices; District, Town and Municipal Councils; and Bank of Tanzania computations

Note: p denotes provisional data; and “---”, a change that exceeds 100 percent

### 3.1.3 Forestry

The value of forest products increased to TZS 215.9 billion from TZS 192.8 billion recorded in the corresponding quarter in 2020 (**Table 3.3**). The outturn was mainly a reflection of high demand for timber by construction industry and wood for furniture. Southern Highlands zone dominated the subsector by contributing about 90.7 percent of the total value of forest products.



Consolidated Zonal Economic Performance Report

**Table 3.3: Value of Forest Products**

Quarter ending	Product	Unit of measure	Central	Lake	Northern	South Eastern	Southern Highlands	Total
Sep-20	Logs	Cubic meter	0.0	7.8	0.0	6,732.6	0.0	6,740.4
		Millions of TZS	0.0	2.3	0.0	1,325.3	0.0	1,327.5
	Timber	Cubic meter	42.0	65.0	58,370.5	218.6	252,667.2	311,363.3
		Millions of TZS	246.0	18.9	4,964.6	41.9	96,013.5	101,285.0
	Charcoal	Bags	0.0	4,593.0	0.0	170,925.6	0.0	175,518.6
		Millions of TZS	0.0	57.4	0.0	2,252.6	0.0	2,310.0
	Fire wood	Cubic meter	0.0	38.0	0.0	19,098.2	0.0	19,136.2
		Millions of TZS	0.0	0.2	0.0	125.4	0.0	125.6
	Poles	Cubic meter	0.0	5.4	7,382.0	18,899.2	0.0	26,286.6
		Millions of TZS	0.0	0.0	14.3	56.6	82,487.5	82,558.4
	Wood for furniture	Cubic meter	0.0	0.0	0.0	681.6	38,027.0	38,708.6
		Millions of TZS	0.0	0.0	0.0	161.7	363.7	525.4
	Honey and wax	Tonnes	770.1	0.8	0.0	0.0	0.0	770.9
		Millions of TZS	4,636.2	8.3	0.0	0.0	0.0	4,644.5
	Others	Millions of TZS	0.0	0.0	6.1	1.5	0.0	7.5
	Total	Millions of TZS	4,882.2	87.1	4,985.0	3,965.0	178,864.7	192,784.1
Sep-21 <sup>P</sup>	Logs	Cubic meters	1,370.4	6.3	63,782.9	5,168.6	0.0	70,328.2
		Millions of TZS	122.6	1.8	8,320.4	1,494.0	0.0	9,938.9
	Timber	Cubic meters	691.5	9.0	0.0	114,039.2	278,792.4	393,532.1
		Millions of TZS	29.3	2.6	0.0	40.5	111,434.5	111,506.9
	Charcoal	Bags	44,246.0	2,382.0	0.0	171,073.8	0.0	217,701.8
		Millions of TZS	879.3	29.8	0.0	2,139.3	0.0	3,048.3
	Fire wood	Cubic meters	894.7	18.0	0.0	19,284.1	0.0	20,196.8
		Millions of TZS	8.3	0.1	0.0	125.3	0.0	133.7
	Poles	Cubic meters	6,838.3	3.1	4,685.0	35,796.0	280,209.0	327,531.4
		Millions of TZS	14.2	0.0	6.6	45.6	84,062.7	84,129.1
	Wood for furniture	Cubic meters	1,649.9	0.0	0.0	89,228.8	36,328.0	127,206.7
		Millions of TZS	89.2	0.0	0.0	188.6	356.7	634.5
	Honey and wax	Tonnes	650.8	0.6	0.0	0.0	0.0	651.5
		Millions of TZS	6,509.3	6.1	0.0	0.0	0.0	6,515.5
	Others	Millions of TZS	0.0	0.0	2.3	7.0	0.0	9.2
	Total	Millions of TZS	7,652.2	40.5	8,329.2	4,040.3	195,853.9	215,916.1
	Percentage share in total		3.5	0.0	3.9	1.9	90.7	100.0

Source: Tanzania Forest Services

Note: p denotes provisional data

### 3.2 Manufacturing

Manufacturing sub-sector continued to grow, triggered by increased capacity utilization, new establishments and increase in demand from neighboring countries, including Zambia, Democratic



Consolidated Zonal Economic Performance Report

Republic of Congo, Kenya, Uganda, Rwanda, Malawi, Mozambique and Comoro. During the quarter, goods worth TZS 2,995.2 billion were manufactured, 13.9 percent higher than in the similar quarter in 2020. Dar es Salaam zone had the largest share of 50.9 percent followed by South Eastern and Northern zones, which contributed 15.0 percent and 12.4 percent, respectively. The performance was mainly driven by rolled steel, ceramics, sugar and cement (**Table 3.4a** and **Table 3.4b**).

**Table 3.4a: Value of Selected Manufactured Commodities by Zone**

Zone	Quarter ending			Percentage change	Percentage share
	Sep-20 <sup>r</sup>	Jun-21	Sep-21 <sup>p</sup>	Sep -20 to Sep -21	Sep-21
	Central	176.1	102.4	233.2	32.5
Dar es Salaam	1,342.7	1,330.8	1,525.8	13.6	50.9
Lake	147.8	128.6	161.4	9.2	5.4
Northern	338.2	389.8	371.3	9.8	12.4
South Eastern	374.0	398.5	448.3	19.9	15.0
Southern Highlands	250.3	227.1	255.2	2.0	8.5
<b>Total</b>	<b>2,629.1</b>	<b>2,577.1</b>	<b>2,995.2</b>	<b>13.9</b>	<b>100.0</b>

Source: National Bureau of Statistics, respective industries and Bank of Tanzania computations

Note: r denotes revised data; and p, provisional data





Consolidated Zonal Economic Performance Report

**Table 3.4b: Value of Selected Manufactured Commodities by Type**

Commodity	Quarter ending			Billions of TZS
	Sep-20	Jun-21	Sep-21	Percentage change Sep-20 to Sep-21
Total value	2,629.1	2,577.1	2,995.2	13.9
<i>o/w:</i>				
Beverages	580.7	616.4	660.4	13.7
Cement	316.6	310.1	362.5	14.5
Sugar	207.1	142.1	252.0	21.7
Rolled steel	138.5	211.3	236.3	70.6
Vegetable oils and fats	160.8	71.2	157.4	-2.1
Soap and toilet detergents	147.7	70.1	148.0	0.3
Ceramics	64.5	64.5	86.6	34.3
Textiles	72.6	55.9	60.4	-16.8
Plastic articles	52.8	63.0	50.8	-3.7

Source: National Bureau of Statistics and respective industries

Note: o/w denotes of which

### 3.3 Mining

The value of mineral recovery declined by 10.3 percent to USD 641.8 million (equivalent to TZS 1,474.4 billion) from the value recorded in the corresponding period in 2020, with gold accounting for 87.3 percent of the total value (**Table 3.5** and **Table 3.6**). The decline was largely driven by decrease in recovery of gold, coal and limestone, with closure of Buzwagi Gold Mine Site in the Lake zone contributing greatly to a slowdown in gold recovery. Despite the observed decline in value of mineral recovery in Lake zone, the zone continued to account for the largest share of the total value at 69.9 percent.

**Table 3.5: Value of Selected Mineral Recovery by Zone**

Zone	Quarter ending			Percentage change	Percentage share Sep-21
	Sep-20	Jun-21	Sep-21 <sup>P</sup>	Sep-20 to Sep-21	
Central	24.7	26.2	30.0	21.2	4.7
Lake	533.2	469.0	448.8	-15.8	69.9
Northern	19.5	7.1	20.4	4.7	3.2
South Eastern	54.7	46.3	49.4	-9.6	7.7
Southern Highlands	83.4	84.3	93.1	11.6	14.5
Total	715.6	632.9	641.8	-10.3	100.0

Source: Regional Resident Mines Offices, Mining Commission and Bank of Tanzania computations

Note: p denotes provisional data



Consolidated Zonal Economic Performance Report

**Table 3.6: Value of Selected Mineral Recovery by Type**

Millions of USD

Type	Quarter ending			Percentage change	Percentage share, Sep-
	Sep-20	Jun-21	Sep-21 <sup>P</sup>	Sep-20 to Sep-21	21
Gold	632.2	570.5	560.2	-11.4	87.3
Coal	24.6	25.1	24.6	0.0	3.8
Building materials	24.0	21.1	24.2	1.0	3.8
Gemstones	1.0	5.1	8.8	---	1.4
Industrial minerals	11.2	2.2	7.3	-34.8	1.1
Limestone	6.7	4.0	4.4	-34.1	0.7
Gypsum	1.3	1.5	4.0	---	0.6
Tanzanite	8.9	0.9	3.8	-57.4	0.6
Gas (CO <sub>2</sub> )	1.8	1.7	2.2	19.0	0.3
Salt	0.8	0.4	1.6	---	0.3
Others	3.3	0.4	0.7	-78.8	0.1
<b>Total</b>	<b>715.6</b>	<b>632.9</b>	<b>641.8</b>	<b>-10.3</b>	<b>100.0</b>

Source: Regional Resident Mines Offices, Mining Commission and Bank of Tanzania computations

Note: p denotes provisional data; and "---", change that exceeds 100 percent

Further, minerals worth TZS 593.7 billion were traded in the mineral market centers compared with TZS 631.4 billion recorded in the corresponding quarter of 2020 (**Table 3.7**). Lake zone accounted for largest share of the total value at 54.7 percent followed by Southern Highlands zone at 35.2 percent. Trade in the market centers is dominated by gold, contributing about 97.2 percent of the total sales.



Consolidated Zonal Economic Performance Report

**Table 3.7: Value of Minerals Sold at Market Centers**

		Millions of TZS						
Quarter ending	Mineral	Central	Dar es Salaam	Lake	Northern	South Eastern	Southern Highlands	Total
Sep-20	Gold	41,394.0	3,091.0	373,679.9	2,041.1	6,214.0	187,359.4	613,779.3
	Tanzanite	0.0	0.0	0.0	15,226.8	0.0	0.0	15,226.8
	Diamond	0.0	0.0	805.4	0.0	0.0	0.0	805.4
	Tin	0.0	0.0	0.0	0.0	0.0	0.0	0.0
	Gemstone	296.2	65.4	0.0	1,118.8	148.5	0.0	1,628.8
	<b>Total</b>	<b>41,690.2</b>	<b>3,156.4</b>	<b>374,485.3</b>	<b>18,386.7</b>	<b>6,362.4</b>	<b>187,359.4</b>	<b>631,440.3</b>
Jun-21	Gold	34,437.0	1,171.4	320,267.3	3,252.3	5,965.9	189,241.8	554,335.6
	Tanzanite	0.0	365.3	0.0	7,976.1	0.0	0.0	8,341.4
	Diamond	0.0	0.0	632.2	0.0	0.0	0.0	632.2
	Tin	0.0	0.0	2,221.7	0.0	0.0	0.0	2,221.7
	Gemstone	236.7	46.2	0.0	3,616.2	305.6	0.0	4,204.7
	<b>Total</b>	<b>34,673.8</b>	<b>1,582.8</b>	<b>323,121.1</b>	<b>14,844.6</b>	<b>6,271.5</b>	<b>189,241.8</b>	<b>569,735.5</b>
Sep-21 <sup>P</sup>	Gold	37,426.3	406.5	321,718.7	3,328.3	5,569.1	208,690.7	577,139.5
	Tanzanite	0.0	628.1	0.0	8,825.0	0.0	0.0	9,453.1
	Diamond	0.0	0.0	1,486.8	0	0.0	0.0	1,486.8
	Tin	0.0	0.0	1,416.3	0.0	0.0	0.0	1,416.3
	Gemstone	719.2	6.6	0.0	3,011.4	438.1	0.0	4,175.2
	<b>Total</b>	<b>38,145.4</b>	<b>1,041.1</b>	<b>324,621.8</b>	<b>15,164.7</b>	<b>6,007.2</b>	<b>208,690.7</b>	<b>593,670.9</b>
Percentage share		6.4	0.2	54.7	2.6	1.0	35.2	100.0

Source: Regional Residents Mines Offices and Mining Commission

Note: p denotes, provisional data

### 3.4 Tourism

Tourism activities improved significantly during the quarter under review as the number of visitors and earnings (entry, vehicle, concession, camping and other fees) from national parks increased. The number of visitors increased to 325,967 from 131,393 while earnings rose by more than threefold to TZS 60.5 billion (**Table 3.8**). This performance reflects a gradual recovery in tourism activities following relaxation of travel restriction measures taken by source countries. In terms of share, Northern zone accounted for 54.5 percent and 47.2 percent of total number of visitors and earning, respectively.



Consolidated Zonal Economic Performance Report

**Table 3.8: Earnings and Visitors to National Parks**

Zone	Unit of measure	Quarter ending			Percentage change	Percentage share,
		Sep-20 <sup>r</sup>	Jun-21 <sup>r</sup>	Sep-21 <sup>p</sup>	Sep-20 to Sep-21	Sep-21
Central	Number of visitors	7,729	13,240	20,451	---	6.3
	Earnings in Millions of TZS	211.4	349.4	748.0	---	1.2
Lake	Number of visitors	54,485	52,678	106,249	95.0	32.6
	Earnings in Millions of TZS	5,091.0	7,070.8	28,348.4	---	46.9
Northern	Number of visitors	59,924	88,811	177,567	---	54.5
	Earnings in Millions of TZS	6,921.6	10,809.7	28,569.2	---	47.2
South Eastern	Number of visitors	5,873	6,944	14,747	---	4.5
	Earnings in Millions of TZS	424.7	593.6	1,606.8	---	2.7
Southern Highlands	Number of visitors	3,382	3,987	6,953	---	2.1
	Earnings in Millions of TZS	89.6	507.3	1,195.1	---	2.0
Total	Number of visitors	131,393	165,660	325,967	---	100.0
	Earnings in Millions of TZS	12,738.2	19,330.8	60,467.4	---	100.0

Source: Tanzania National Park Authority, Ngorongoro Conservation Area Authority and Bank of Tanzania computations

Note: r denotes revised data; p, provisional data; and “---”, change that exceeds 100 percent

As for museums, the number of visitors and earnings grew by 22.1 percent and 49.1 percent to 12,784 and TZS 126.5 million, respectively, from the level recorded in the preceding quarter (**Table 3.9**). Dar es Salaam zone accounted for the largest share of the number of visitors and earnings obtained from this tourists' attraction at 66.6 percent and 65.6 percent, respectively.



Consolidated Zonal Economic Performance Report

**Table 3.9: Earnings and Visitors to Museums**

Zone	Unit of measure	Quarter ending			Percentage change Jun-21 to Sep-21	Percentage share, Sep-21
		Mar-21	Jun-21	Sep-21 <sup>p</sup>		
Dar es Salaam	Number of visitors	5,793	5,737	8,513	48.4	66.6
	Earnings (Millions of TZS)	65.8	71.5	83.0	16.0	65.6
Lake	Number of visitors	843	1,272	1,760	38.4	13.8
	Earnings (Millions of TZS)	2.6	3.2	4.2	29.3	3.3
Northern	Number of visitors	1,384	2,685	1,636	-39.1	12.8
	Earnings (Millions of TZS)	11.0	7.6	10.9	44.3	8.6
South Eastern	Number of visitors	737	775	875	12.9	6.8
	Earnings (Millions of TZS)	1.4	2.5	28.5	---	22.5
Total	Number of visitors	8,757	10,469	12,784	22.1	100.0
	Earnings (Millions of TZS)	80.8	84.8	126.5	49.1	100.0

Source: National Museum of Tanzania and Bank of Tanzania computations

Note: p denotes provisional data; and "---", change that exceeds 100 percent

### 3.5 Energy

Electricity generated domestically increased by 9.0 percent to 2,093,347.7 Megawatt hour (MWh) from the volume generated in the similar quarter of 2020. Much of the increase occurred in Dar es Salaam gas power plants, which offset the decrease in electricity from hydro power sources. Meanwhile, electricity imported from Uganda and Zambia declined by 8.7 percent to 29,482.7 MWh from the volume reported in the corresponding quarter last year (**Table 3.10**).

Production of natural gas increased by 8.9 percent to 16,051.0 Million Standard Cubic Feet (MMSCF) from the volume produced in the corresponding quarter of 2020. Improvement was recorded in Songo Songo and Mnazi Bay gas fields, partly due to increased demand by Tanzania Electric Supply Company Limited for electricity generation.



Consolidated Zonal Economic Performance Report

**Table 3.10: Electricity and Natural Gas Production**

Zone	Quarter ending			Percentage change	Percentage share
	Sep-20 <sup>f</sup>	Jun-21 <sup>r</sup>	Sep-21 <sup>p</sup>	Sep -20 to Sep -21	Sep-21
Electricity (MWh):					
Central	463,262.7	564,885.0	498,563.9	7.6	23.5
Dar es Salaam	1,103,804.0	1,101,312.3	1,271,759.6	15.2	59.9
Lake	37,303.3	37,413.9	33,110.6	-11.2	1.6
Northern	151,809.7	122,561.3	108,111.9	-28.8	5.1
South Eastern	33,645.8	32,368.1	33,880.5	0.7	1.6
Southern Highlands	162,331.1	190,190.7	177,404.0	9.3	8.4
Total (including imported power)	1,952,156.6	2,048,731.3	2,122,830.5	8.7	100.0
Total (excluding imported power)	1,919,853.5	2,016,424.1	2,093,347.7	9.0	
Natural gas (MMSCF):					
South Eastern	14,738.0	14,086.6	16,051.0	8.9	

Source: Tanzania Petroleum Development Corporation, Tanzania Electric Supply Company Limited and Bank of Tanzania computations

Note: MWh denotes Megawatts hour; MMSCF, million standard cubic feet; 'r', revised data; and 'p', provisional data.



Consolidated Zonal Economic Performance Report

**Table 3.11: Electricity Generation by Source**

								MWh
Quarter ending	Source	Central	Dar es Salaam	Lake	Northern	South Eastern	Southern Highlands	Total
Sep-20	Generated by Tanesco plants	463,262.7	814,314.2	13,843.3	145,893.5	23,183.5	152,806.5	1,613,303.8
	Hydro	463,262.7	0.0	0.0	145,893.5	0.0	152,806.5	761,962.7
	Thermal	0.0	814,314.2	13,843.3	0.0	23,183.5	0.0	851,341.1
	Generated by private plants	0.0	289,489.7	0.0	5,916.1	10,462.3	681.6	306,549.7
	Hydro	0.0	0.0	0.0	5,916.1	10,462.3	0.0	16,378.4
	Thermal	0.0	289,489.7	0.0	0.0	0.0	681.6	290,171.3
	Imported	0.0	0.0	23,460.0	0.0	0.0	8,843.1	32,303.1
	<b>Total</b>	<b>463,262.7</b>	<b>1,103,804.0</b>	<b>37,303.3</b>	<b>151,809.7</b>	<b>33,645.8</b>	<b>162,331.1</b>	<b>1,952,156.6</b>
Jun-21	Generated by Tanesco plants	563,586.3	811,013.6	15,294.9	121,072.1	26,750.6	179,130.1	1,716,847.6
	Hydro	563,586.3	0.0	0.0	121,072.1	0.0	179,130.1	863,788.5
	Thermal	0.0	811,013.6	15,294.9	0.0	26,750.6	0.0	853,059.1
	Generated by private plants	1,298.7	290,298.7	0.0	1,489.1	5,617.5	872.4	299,576.5
	Hydro	1,298.7	0.0	0.0	1,489.1	5,617.5	0.0	8,405.4
	Thermal	0.0	290,298.7	0.0	0.0	0.0	872.4	291,171.1
	Imported	0.0	0.0	22,119.0	0.0	0.0	10,188.2	32,307.2
	<b>Total</b>	<b>564,885.0</b>	<b>1,101,312.3</b>	<b>37,413.9</b>	<b>122,561.3</b>	<b>32,368.1</b>	<b>190,190.7</b>	<b>2,048,731.3</b>
Sep-21	Generated by Tanesco plants	496,795.0	912,397.8	14,178.6	101,709.8	27,793.4	166,009.2	1,718,883.9
	Hydro	496,733.2	0.0	0.0	101,709.8	0.0	166,009.2	764,452.2
	Thermal	61.8	912,397.8	14,178.6	0.0	27,793.4	0.0	954,431.7
	Generated by private plants	1,768.9	359,361.8	0.0	6,402.0	6,087.1	844.1	374,463.9
	Hydro	1,768.9	0.0	0.0	5,914.2	6,087.1	0.0	13,770.2
	Thermal	0.0	359,361.8	0.0	487.9	0.0	844.1	360,693.7
	Imported	0.0	0.0	18,932.0	0.0	0.0	10,550.7	29,482.7
	<b>Total</b>	<b>498,563.9</b>	<b>1,271,759.6</b>	<b>33,110.6</b>	<b>108,111.9</b>	<b>33,880.5</b>	<b>177,404.0</b>	<b>2,122,830.5</b>

Source: Tanzania Petroleum Development Corporation and Tanzania Electric Supply Company Limited

## 4.0 GOVERNMENT REVENUE PERFORMANCE

### 4.1 Central Government Tax Revenue

Central government tax collection amounted to TZS 5,088.2 billion<sup>6</sup>, equivalent to 95.0 percent of the target for the quarter, with Dar es Salaam zone accounting for 90.8 percent of total collection (**Table 4.1**). Tax on imports increased by 14.9 percent to TZS 2,076.7 billion partly explained by high importation of merchandise goods following relaxation of measures taken to address COVID-19 pandemic challenges.

<sup>6</sup> Tax revenue is on gross basis—inclusive of tax refunds.



Consolidated Zonal Economic Performance Report

**Table 4.1: Tax Revenue Performance by Zone**

Billions of TZS

Zone	Quarter ending					Percentage change Sep-20 to Sep-21	Percentage share Sep-21
	Sep-20	Jun-21	Sep-21		Actual to target ratio		
	Actual	Target	Actual <sup>p</sup>	Target			
Central	69.6	73.8	85.2	73.0	85.7	5.0	1.4
Dar es Salaam	3,831.6	3,969.5	4,847.3	4,618.5	95.3	20.5	90.8
Lake	140.2	117.7	124.9	120.2	96.2	-14.3	2.4
Northern	175.2	171.0	191.5	182.5	95.3	4.1	3.6
South Eastern	39.0	30.1	38.0	33.1	86.9	-15.2	0.6
Southern Highlands	69.8	69.3	67.0	61.0	91.1	-12.6	1.2
Total	4,325.3	4,431.4	5,353.9	5,088.2	95.0	17.6	100.0

Source: Tanzania Revenue Authority and Bank of Tanzania computations

Note: Tax revenue is on gross basis and p, provisional data

**Table 4.2: Tax Revenue Performance by Category**

Billions of TZS

Quarter ending	Category	Central	Dar es Salaam	Lake	Northern	South Eastern	Southern Highlands	Total	Percentage share
Sep-20 <sup>f</sup>	Tax on imports	0.7	1,682.2	37.6	57.3	8.8	21.3	1,807.9	41.6
	Indirect tax	11.4	968.5	34.4	49.3	11.6	18.4	1,093.4	25.2
	Direct tax	57.6	1,181.0	68.2	85.4	18.6	30.1	1,440.8	33.2
	Total	69.6	3,831.6	140.2	192.0	39.0	69.8	4,342.1	100.0
Jun-21	Tax on imports	0.3	1,795.6	39.4	70.1	5.6	28.4	1,939.5	43.8
	Indirect tax	9.0	842.8	33.9	32.7	8.6	12.2	939.1	21.2
	Direct tax	64.4	1,331.1	44.4	68.3	15.9	28.7	1,552.8	35.0
	Total	73.8	3,969.5	117.7	171.0	30.1	69.3	4,431.4	100.0
Sep-21 <sup>p</sup>	Tax on imports	0.3	1,942.4	40.3	71.8	3.6	18.4	2,076.7	40.8
	Indirect tax	9.5	1,099.1	36.5	41.8	10.7	14.9	1,212.5	23.8
	Direct tax	63.3	1,577.0	43.4	68.9	18.7	27.7	1,799.1	35.4
	Total	73.0	4,618.5	120.2	182.5	33.1	61.0	5,088.2	100.0

Source: Tanzania Revenue Authority and Bank of Tanzania computations

Note: Tax revenue is on gross basis; r denotes revised data; and p, provisional data

## 4.2 Local Government Revenue Collection

Local Government Authorities (LGAs) revenue collection from own sources amounted to TZS 216.9 billion, equivalent to 99.2 percent of the target (**Table 4.3**). This performance was partly associated with enforcement of non-tax payments and enhanced use of electronic fiscal devices. Dar es Salaam and Lake zones accounted for the largest share of collections at 25.0 percent and 20.9 percent, respectively.





Consolidated Zonal Economic Performance Report

**Table 4.3: Local Government Revenue Performance by Zone**

Billions of TZS

Zone	Quarter ending				Actual to target ratio	Percentage change Sep-20 to Sep-21	Percentage share Sep-21
	Sep-20	Jun-21	Sep-21				
	Actual		Target	Actual <sup>p</sup>			
Central	28.0	32.5	36.4	32.6	89.5	16.4	15.0
Dar es salaam	39.5	41.4	48.4	54.2	111.8	37.2	25.0
Lake	38.6	37.1	43.8	45.3	103.5	17.5	20.9
Northern	21.5	30.7	34.5	35.4	102.7	64.9	16.3
South Eastern	19.5	24.9	27.3	23.9	87.6	22.8	11.0
Southern Highlands	21.2	24.6	28.2	25.4	90.2	19.9	11.7
<b>Total</b>	<b>168.2</b>	<b>191.2</b>	<b>218.6</b>	<b>216.9</b>	<b>99.2</b>	<b>28.9</b>	<b>100.0</b>

Source: Regional Administrative Secretary Offices and Bank of Tanzania computations

Note: p denotes provisional data

## 5.0 TRADE

### 5.1 Cross Border Trade

Cross-border trade with neighboring countries continued to register trade surplus. The trade surplus increased by 27.0 percent to TZS 1,911.5 billion from the level recorded in the corresponding quarter in 2020 (**Table 5.1**). The value of exports increased by 24.7 percent to TZS 2,313.7 billion, while imports rose by 14.6 percent to TZS 402.2 billion. In the Southern Highlands zone, trade balance improved largely due to an increase in the export of maize flour and other consumer goods, while in the Lake zone, it was due to increase in export of livestock; fish and fish products; cotton seed cake, food items and other consumer goods. Southern Highlands and Lake zones both contributed about 70 percent of the total trade surplus.



Consolidated Zonal Economic Performance Report

**Table 5.1: Cross Border Trade**

Billions of TZS

Zone		Quarter ending			Percentage change		Percentage share Sep-21
		Sep-20 <sup>r</sup>	Jun-21	Sep-21 <sup>P</sup>	June-21 to Sep-21	June-21 to Sep-21	
Lake	Exports	1,035.7	1,277.6	1,492.3	16.8	44.1	64.5
	Imports	134.9	161.6	156.4	-3.2	16.0	38.9
	Trade balance	900.8	1,116.0	1,335.9	19.7	48.3	
Nothern	Exports	754.2	769.3	742.3	-3.5	-1.6	32.1
	Imports	138.9	141.7	169.2	19.4	21.8	42.1
	Trade balance	615.3	627.6	573.1	-8.7	-6.9	
South Eastern	Exports	2.0	2.6	2.1	-18.5	4.4	0.1
	Imports	0.3	0.5	0.3	-34.7	23.6	0.1
	Trade balance	1.8	2.1	1.8	-14.3	1.4	
Southern Highlands	Exports	64.0	63.1	77.0	21.9	20.3	3.3
	Imports	76.8	78.3	76.3	-2.6	-0.6	19.0
	Trade balance	-12.8	-15.2	0.7	---	---	
Total	Exports	1,855.9	2,112.6	2,313.7	9.5	24.7	100.0
	Imports	350.8	382.1	402.2	5.3	14.6	100.0
	Trade balance	1,505.0	1,730.5	1,911.5	10.5	27.0	

Source: Tanzania Revenue Authority and Bank of Tanzania computations

Note: "---" change that exceeds 100 percent

## 5.2 Ports Performance

Total volume of cargo handled through sea and lake ports rose by 10.7 percent to 4,677.0 thousand tonnes from the amount recorded in the quarter ending September 2020. The increase was mostly notable in Dar es Salaam, Mtwara, and Lindi ports (**Table 5.2**). The performance of Dar es Salaam port was partly due to expansion of berths and dredging of the entrance channel, together with efforts made by the Government to attract neighboring countries to use the port. In Mtwara Port, the increase was explained by importation of liquid cargo specifically petroleum products, while in Lindi, it was due to increase in general cargo, particularly forest and sea products. Conversely, slowdown in cargo handled through other ports were associated with slow recovery of production and business from COVID-19 disruptions.



Consolidated Zonal Economic Performance Report

**Table 5.2: Ports Performance**

Zone	Port	Quarter ending			Percentage change Sep-20 to Sep-21	Percentage share Sep-21
		Sep-20	Jun-21	Sep-21 <sup>P</sup>		
Dar es Salaam	Dar es Salaam	3,922,931	3,877,869	4,400,048	12.2	91.1
Lake	Kigoma	69,324	65,866	49,608	-28.4	1.5
	Mwanza	37,041	53,058	15,371	-58.5	1.2
Northern	Tanga	159,317	220,619	157,686	-1.0	5.2
South Eastern	Mtwara	27,356	33,330	46,711	70.8	0.8
	Kilwa	3,308	3,948	2,188	-33.9	0.1
	Lindi	598	2,684	3,225	---	0.1
	Mbamba bay	3,086	38	1,154	-62.6	0.0
Southern Highlands	Kiwira	3,386	241	1,006	-70.3	0.0
	Itungi	7	0	22	---	0.0
	Matema	3	46	n.a	N/A	0.0
	Manda	22	33	14	-36.4	0.0
	Liuli	5	3	n.a	N/A	0.0
<b>Total</b>		<b>4,226,384</b>	<b>4,257,734</b>	<b>4,677,033</b>	<b>10.7</b>	<b>100.0</b>

Source: Tanzania Port Authority and Bank of Tanzania computations

Note: p denotes provisional data; n.a, not available; N/A, not applicable; and “---”, change that exceeding 100 percent

## 6.0 FINANCIAL SECTOR DEVELOPMENTS

### 6.1 Banks’ Deposits and Loans

Deposits mobilized by banks increased across all zones except Southern Highlands and Lake zones. On aggregate, deposits increased by 3.5 percent to TZS 22,199.2 billion, with Dar es Salaam zone contributing the largest share of 62.8 percent (**Table 6.1**). Increase in deposits reflects deposit mobilisation measures adopted by banks including introduction of new products, use of agent banking and digital banking platforms.



Consolidated Zonal Economic Performance Report

**Table 6.1: Banks' Deposits**

Zone	At the end of			Percentage change	Billions of TZS Percentage share
	Sep-20	Jun-21	Sep-21 <sup>P</sup>	Sep-20 to Sep-21	Sep-21
Central	1,463.8	1,977.2	1,874.1	28.0	8.4
Dar es Salaam	13,665.4	13,756.3	13,947.2	2.1	62.8
South Eastern	734.1	780.6	835.8	13.9	3.8
Lake	1,927.2	2,040.8	1,871.3	-2.9	8.4
Northern	2,427.3	2,326.8	2,564.8	5.7	11.6
Southern Highlands	1,230.3	820.7	1,105.9	-10.1	5.0
<b>Total*</b>	<b>21,448.2</b>	<b>21,702.4</b>	<b>22,199.2</b>	<b>3.5</b>	<b>100.0</b>

Source: Banks and Bank of Tanzania computations

Note: \* data excludes Zanzibar; and p, denotes provisional data

Banks' loans<sup>7</sup> to various economic activities expanded by 4.2 percent to TZS 17,817.4 billion at the end of September 2021 from TZS 17,102.0 billion in the similar period in 2020 (**Table 6.2**). This improvement was due to gradual recovery of economic activities after challenges of the outbreak of COVID-19 pandemic. Much of banks' lending was directed to personal; wholesale and retail trade; and agriculture related activities—together accounting for 71.6 percent of total loans (**Table 6.3**).

**Table 6.2: Banks' Loans**

Zone	At the end of			Percentage change	Billions of TZS Percentage share
	Sep-20	Jun-21	Sep-21 <sup>P</sup>	Sep-20 to Sep-21	Sep-21
Central	1,491.2	1,576.0	1,705.6	14.4	9.6
Dar es Salaam	10,301.3	10,504.0	10,567.5	2.6	59.3
South Eastern	744.4	741.0	782.8	5.2	4.4
Lake	2,257.6	2,128.0	2,247.4	-0.5	12.6
Northern	1,694.3	1,790.7	1,881.9	11.1	10.6
Southern Highlands	613.3	614.2	632.2	3.1	3.5
<b>Total</b>	<b>17,102.0</b>	<b>17,353.9</b>	<b>17,817.4</b>	<b>4.2</b>	<b>100.0</b>

Source: Banks and Bank of Tanzania computations Note: p denotes provisional data

<sup>7</sup> Banks' loans include loans and advances provided by banks in Tanzania Mainland only, and do not include accrued interest on loans and advances as well as other sources of financing to the private sector such as securities, shares and other equity as well as prepaid insurance premiums.



Consolidated Zonal Economic Performance Report

**Table 6.3: Percentage Share of Banks' Lending by Activity as at the end of September 2021**

Activity	Central	Dar es Salaam	Lake	Northern	South Eastern	Southern Highlands	Average
Personal	73.8	18.9	20.9	24.7	54.6	52.5	40.9
Wholesale and retail trade	7.0	22.4	50.0	16.1	14.4	7.2	19.5
Agriculture, hunting, forestry and fishing	9.8	2.5	11.4	6.0	14.5	23.2	11.2
Services (health and education)	0.9	9.5	1.6	35.3	2.4	5.0	9.1
Manufacturing	2.6	12.2	6.2	5.2	2.8	2.6	5.3
Building and construction	0.6	5.6	2.4	2.7	2.4	1.8	2.6
Transport, storage and communication	1.0	7.7	1.1	1.2	1.9	2.4	2.5
Real estate	1.5	7.3	4.1	1.1	0.7	0.0	2.4
Hotels and restaurants	1.1	3.3	1.1	4.9	0.2	0.4	1.8
Electricity, gas and water	0.1	2.7	0.3	0.5	1.7	0.8	1.0
Mining and quarrying	0.0	1.6	0.4	0.1	0.6	1.8	0.8
Financial intermediation	0.1	2.2	0.1	0.2	0.4	0.4	0.6
Others	1.6	4.2	0.4	2.0	3.3	1.8	2.2

Source: Banks and Bank of Tanzania computations

## 6.2 Agent Banking Transactions

The agent banking services across all zones improved during the quarter under review, as reflected by increase in number of bank agents, number of transactions and value of cash deposits and withdrawals. The number of transactions and value of cash deposits went up by 62.9 percent and 90.9 percent to 15,395,493 and TZS 11,797 billion, respectively. Likewise, the total number of transactions and value of cash withdrawal grew by 38.2 percent and 55.2 percent to 8,253,863 and TZS 3,674.3 billion, respectively (**Table 6.4**). This improvement was associated with the increased awareness and integration of banking services with other payment systems.



Consolidated Zonal Economic Performance Report

**Table 6.4: Agent Banking Transactions**

Zone	Quarter ending	Number of agents	Cash deposit		Cash withdrawal	
			Number of transactions	Value (Millions of TZS)	Number of transactions	Value (Millions of TZS)
Central	Sep-20	5,179	1,353,373	814,570	951,364	341,953
	Jun-21	6,106	1,563,887	1,133,669	1,056,510	351,407
	Sep-21	5,766	2,099,738	1,495,034	1,198,023	549,970
Dar es Salaam	Sep-20	12,218	1,853,334	1,385,753	1,380,093	522,577
	Jun-21	14,216	2,524,893	2,305,829	1,688,771	594,411
	Sep-21	15,285	3,533,576	2,954,081	2,145,208	916,290
Lake	Sep-20	6,886	2,169,825	1,585,555	1,089,181	521,031
	Jun-21	8,120	2,723,633	2,309,167	1,251,265	555,829
	Sep-21	8,708	3,856,635	2,944,583	1,697,707	748,802
Northern	Sep-20	6,309	1,478,373	880,431	893,983	301,830
	Jun-21	7,282	1,760,799	1,331,200	1,041,481	338,810
	Sep-21	7,507	2,383,078	1,805,342	1,222,647	488,352
South Eastern	Sep-20	2,650	828,841	497,346	702,450	255,476
	Jun-21	3,318	937,358	596,166	690,776	201,750
	Sep-21	3,084	1,155,661	853,032	828,320	346,377
Southern Highlands	Sep-20	4,685	1,769,843	1,015,910	955,989	424,518
	Jun-21	5,644	1,913,339	1,327,394	1,073,471	432,181
	Sep-21	5,525	2,366,805	1,744,936	1,161,958	624,500
Total*	Sep-20	37,927	9,453,589	6,179,566	5,973,060	2,367,385
	Jun-21	44,686	11,423,909	9,003,424	6,802,274	2,474,388
	Sep-21	45,875	15,395,493	11,797,008	8,253,863	3,674,292
Percentage change, Sep-20 to Sep-21		21.0	62.9	90.9	38.2	55.2

Source: Bank of Tanzania

Note: \* data do not include Zanzibar

### 6.3 Savings and Credit Cooperative Societies

Generally, the performance of Savings and Credit Cooperative Societies (SACCOS) activities improved during the quarter under review. Members, number of SACCOS, share value and loans issued decreased while deposit and savings increased relative to the similar period of 2020 (**Table 6.5**). This was largely associated to ongoing licensing exercise of registering SACCOS in line with Microfinance Act 2018 of which some of the SACCOS were not qualified with the capital and other licensing requirements.



Consolidated Zonal Economic Performance Report

**Table 6.5: Performance of Savings and Credit Cooperative Societies**

Quarter ending	Category	Central	Lake	Northern	South Eastern	Southern Highlands	Total
Sep-20	Number of SACCOS	860	735	877	114	593	3,179
	Members	133,133	129,898	204,632	12,086	117,225	596,974
	Shares value (Mil. of TZS)	7,022.6	6,876.4	15,800.4	1,166.9	33,929.1	64,795.4
	Savings (Mil. of TZS)	27,432.9	18,509.6	91,175.3	7,905.9	46,568.5	191,592.2
	Deposits (Mil. of TZS)	5,293.9	1,448.2	22,175.3	628.0	12,988.8	42,534.2
	Loans issued (Mil. of TZS)	145,796.7	30,202.1	551,270.1	16,188.1	153,894.0	897,351.0
	Outstanding loans (Mil. of TZS)	49,581.5	23,615.2	278,054.8	8,850.3	62,645.9	422,747.6
Jun-21	Number of SACCOS	441	574	951	101	568	2,635
	Members	110,326	98,784	217,804	10,792	84,522	522,228
	Shares value (Mil. of TZS)	5,814.4	6,090.3	18,812.1	1,356.7	33,678.6	65,752.1
	Savings (Mil. of TZS)	19,199.1	16,983.4	110,237.2	3,425.5	47,568.4	197,413.5
	Deposits (Mil. of TZS)	1,697.1	1,398.7	28,694.4	5,882.1	13,981.0	51,653.4
	Loans issued (Mil. of TZS)	93,327.9	25,729.7	578,108.7	888.7	129,683.7	827,738.6
	Outstanding loans (Mil. of TZS)	28,054.7	22,172.0	3,367,119.0	7,388.2	58,467.1	3,483,201.1
Sep-21 <sup>p</sup>	Number of SACCOS	187	772	951	66	565	2,541
	Members	41,155	167,097	217,804	8,231	86,532	520,819
	Shares value (Mil. of TZS)	539.2	7,465.2	18,812.1	1,225.9	33,775.6	61,818.0
	Savings (Mil. of TZS)	3,158.5	21,964.5	110,237.2	10,176.7	48,568.4	194,105.3
	Deposits (Mil. of TZS)	602.3	3,059.5	28,694.4	215.7	13,991.0	46,563.0
	Loans issued (Mil. of TZS)	718.7	32,274.1	578,108.7	1,469.3	159,683.7	772,254.5
	Outstanding loans (Mil. of TZS)	2,883.4	26,713.7	336,711.9	9,657.1	60,467.1	436,433.2

Source: Ministry of Agriculture and Regional Administrative Secretary Offices

Note: p denotes provisional data



Consolidated Zonal Economic Performance Report

## 7.0 STATISTICAL ANNEXES

### Annex 1: Regional Gross Domestic Product at Current Prices, Tanzania Mainland

Region	2015	2016	2017	2018	2019 <sup>r</sup>	2020 <sup>p</sup>
Dar es salaam	16,231,328.6	18,425,323.5	20,546,950.8	22,521,298.0	23,896,520.3	25,273,744.0
Mwanza	6,313,142.2	7,813,158.7	8,709,540.3	9,545,154.3	10,269,124.0	10,957,916.0
Mbeya	5,303,678.9	6,091,395.2	6,663,157.9	7,296,183.4	7,837,463.0	8,352,140.0
Shinyanga	4,876,362.6	5,653,566.1	6,084,991.0	6,600,148.6	7,164,597.0	7,589,553.0
Morogoro	4,624,041.3	5,202,453.7	5,700,918.4	6,176,006.7	6,705,640.0	7,163,146.0
Arusha	4,435,304.9	5,094,048.1	5,570,251.5	5,985,038.1	6,551,945.0	6,943,552.0
Tanga	4,397,557.6	5,061,530.7	5,558,367.6	6,001,968.5	6,537,966.0	6,965,603.0
Kilimanjaro	4,284,315.8	4,812,271.3	5,261,476.8	5,740,421.5	6,258,587.0	6,621,744.0
Geita	4,490,341.6	4,894,472.4	5,310,502.5	5,751,274.3	6,201,522.0	6,668,974.0
Ruvuma	3,680,359.4	4,226,976.0	4,513,232.0	4,891,412.4	5,308,638.0	5,623,511.0
Tabora	3,585,991.2	4,118,592.0	4,394,463.4	4,703,384.7	5,168,937.0	5,475,525.0
Mara	3,463,312.5	3,977,692.8	4,335,060.1	4,609,350.4	5,099,065.0	5,401,508.0
Manyara	3,142,460.7	3,620,023.5	3,990,619.1	4,366,862.4	4,693,920.0	4,972,333.0
Iringa	3,584,729.7	3,696,825.1	3,934,576.6	4,139,233.7	4,333,833.0	4,630,735.0
Dodoma	2,736,677.5	3,164,808.5	3,479,914.0	3,863,134.1	4,302,876.0	4,657,713.0
Kigoma	2,736,677.5	3,143,136.0	3,325,545.6	3,616,746.0	3,911,635.0	4,143,648.0
Mtwara	2,453,572.9	2,926,346.4	3,230,478.5	3,543,706.0	3,799,813.0	4,030,174.0
Kagera	2,410,535.4	2,855,913.2	3,026,214.8	3,241,177.1	3,572,624.0	3,784,529.0
Rukwa	2,170,751.1	2,518,426.6	2,543,246.7	2,753,744.4	3,004,180.0	3,182,368.0
Lindi	1,755,248.3	2,124,304.7	2,351,590.5	2,523,610.0	2,766,032.0	2,959,980.0
Coast	1,708,064.2	1,950,914.2	2,315,568.3	2,504,504.5	2,723,661.0	2,984,829.0
Singida	1,698,627.4	2,005,093.2	2,220,956.9	2,412,101.5	2,612,375.0	2,767,324.0
Songwe	1,717,314.4	1,972,374.5	2,173,228.8	2,351,543.9	2,556,236.0	2,707,855.0
Njombe	1,416,784.4	1,629,302.0	1,889,990.3	2,173,488.9	2,517,247.0	2,666,554.0
Katavi	1,132,135.5	1,383,375.8	1,613,655.6	1,732,407.9	1,885,329.0	1,997,154.0
Total	94,349,315.7	108,362,324.3	118,744,498.4	129,043,901.3	139,679,765.3	148,522,112.0

Source: National Bureau of Statistics

Note: r denotes revised data; and p, provisional data





Consolidated Zonal Economic Performance Report

**Annex 2: Regional Per Capita Gross Domestic Product at Current Prices, Tanzania Mainland**  
TZS

Region	2015	2016	2017	2018	2019 <sup>f</sup>	2020 <sup>p</sup>
Dar es salaam	3,414,525.3	3,771,149.0	4,095,226.0	4,375,557.0	4,522,689.0	4,678,751.0
Iringa	3,527,492.6	3,546,649.0	3,681,665.0	3,779,528.0	3,862,146.0	4,028,544.0
Mbeya	2,819,459.1	3,135,211.0	3,321,495.0	3,524,025.0	3,668,170.0	3,788,604.0
Ruvuma	2,496,529.9	2,801,600.0	2,923,326.0	3,096,201.0	3,283,035.0	3,396,983.0
Kilimanjaro	2,455,621.7	2,698,623.0	2,885,925.0	3,079,082.0	3,281,940.0	3,393,587.0
Arusha	2,404,491.0	2,686,226.0	2,859,151.0	2,992,658.0	3,193,186.0	3,300,051.0
Njombe	1,883,483.3	2,117,767.0	2,403,507.0	2,705,703.0	3,068,485.0	3,183,728.0
Lindi	1,901,477.7	2,251,998.0	2,440,764.0	2,565,327.0	2,753,807.0	2,885,533.0
Tanga	2,014,637.9	2,266,384.0	2,432,853.0	2,568,178.0	2,733,502.0	2,843,991.0
Geita	2,274,294.3	2,375,946.0	2,471,830.0	2,567,592.0	2,655,746.0	2,739,023.0
Mtwara	1,823,420.6	2,133,512.0	2,311,244.0	2,488,413.0	2,618,614.0	2,725,164.0
Mwanza	1,879,866.5	2,233,942.0	2,391,919.0	2,518,768.0	2,604,064.0	2,670,009.0
Manyara	1,988,296.4	2,212,877.0	2,357,593.0	2,494,119.0	2,591,996.0	2,654,594.0
Morogoro	1,924,740.7	2,109,028.0	2,252,199.0	2,378,784.0	2,518,581.0	2,623,807.0
Rukwa	1,984,528.9	2,235,234.0	2,191,381.0	2,303,328.0	2,438,539.0	2,505,705.0
Katavi	1,752,607.7	2,047,174.0	2,284,104.0	2,346,683.0	2,444,393.0	2,478,206.0
Mara	1,765,389.3	1,948,605.0	2,041,293.0	2,086,488.0	2,218,608.0	2,258,302.0
Coast	1,448,737.3	1,615,487.0	1,872,708.0	1,979,057.0	2,102,779.0	2,251,254.0
Songwe	1,567,157.2	1,744,604.0	1,863,682.0	1,955,678.0	2,061,530.0	2,117,414.0
Shinyanga	1,482,287.4	1,650,147.0	1,705,949.0	1,777,927.0	1,854,663.0	1,887,800.0
Tabora	1,395,120.5	1,543,075.0	1,586,969.0	1,638,512.0	1,737,793.0	1,777,039.0
Dodoma	1,200,949.8	1,347,534.0	1,438,016.0	1,549,599.0	1,675,239.0	1,759,347.0
Singida	1,143,286.4	1,313,077.0	1,415,250.0	1,495,549.0	1,575,537.0	1,622,891.0
Kigoma	1,160,106.6	1,286,600.0	1,315,117.0	1,382,442.0	1,445,098.0	1,479,389.0
Kagera	884,766.7	1,012,460.0	1,036,396.0	1,072,514.0	1,142,177.0	1,168,661.0
Tanzania Mainland	1,968,965.2	2,225,099.0	2,327,395.0	2,452,406.0	2,573,324.0	2,653,790.0

Source: National Bureau of Statistics

Note: r denotes revised data; and p, provisional data



Consolidated Zonal Economic Performance Report

**Annex 3: Zonal Consumer Price Index**

Base: December 2015 = 100

Zone	Central			Dar es Salaam			Lake			Northern			South Eastern		Southern Highlands			
	Headline	Food	Non-food	Headline	Food	Non-food	Headline	Food	Non-food	Headline	Food	Non-food	Headline	Food	Non-food	Headline	Food	Non-food
Weights (%)	100.0	41.5	58.5	100.0	26.3	73.7	100.0	40.7	59.3	100.0	40.6	59.4	100.0	48.4	51.6	100.0	41.4	58.6
Sep-19	97.3	96.3	98.0	96.6	93.5	97.9	99.2	100.2	98.4	98.3	101.6	96.0	93.9	89.8	97.8	94.4	94.0	94.6
Oct-19	97.5	97.3	97.6	97.0	95.7	97.6	98.8	100.1	97.9	98.0	100.3	96.4	92.8	87.9	97.4	94.3	94.1	94.4
Nov-19	98.7	99.5	98.1	97.4	96.2	97.9	99.0	100.5	97.9	97.8	99.9	96.4	93.2	88.6	97.6	94.9	94.7	95.0
Dec-19	98.4	99.0	98.0	98.2	98.3	98.2	99.3	101.4	97.8	97.8	99.6	96.6	95.0	91.7	98.2	95.7	95.7	95.7
Jan-20	98.7	99.4	98.2	98.3	99.1	98.0	99.5	101.4	98.2	98.2	100.1	96.9	95.7	92.7	98.4	96.1	96.9	95.7
Feb-20	99.6	100.7	98.8	99.8	100.7	99.4	100.0	101.1	99.2	98.8	101.0	97.3	97.7	96.0	99.3	96.4	97.4	95.8
Mar-20	101.0	102.1	100.3	101.2	101.7	101.0	99.7	99.5	99.9	99.2	101.4	97.7	99.1	99.3	99.0	98.6	99.2	98.2
Apr-20	101.5	102.9	100.5	100.4	99.5	100.7	100.4	100.6	100.2	100.6	102.0	99.7	100.2	100.4	100.1	99.9	100.7	99.4
May-20	102.0	103.2	101.1	99.7	99.4	99.8	100.8	102.0	100.0	102.3	103.7	101.3	100.6	100.4	100.8	100.5	101.9	99.7
Jun-20	101.3	101.2	101.4	99.5	99.6	99.5	101.1	101.7	100.7	101.7	102.3	101.3	101.3	101.9	100.7	100.8	102.1	100.1
Jul-20	101.2	101.1	101.2	100.0	99.3	100.4	99.8	99.0	100.3	101.0	101.1	101.0	101.8	103.5	100.2	100.7	101.1	100.5
Aug-20	100.7	100.2	101.0	100.1	99.1	100.5	98.9	97.2	100.1	100.4	99.4	101.0	100.9	101.9	99.8	100.0	99.7	100.2
Sep-20	98.9	98.0	99.5	100.7	101.3	100.5	99.1	97.1	100.5	99.8	97.7	101.2	99.9	100.0	99.9	100.1	99.6	100.5
Oct-20	98.1	97.7	98.4	99.9	99.9	99.9	99.8	99.2	100.3	99.1	97.7	100.1	99.7	99.5	100.0	102.1	100.5	103.0
Nov-20	98.0	96.2	99.3	100.2	99.9	100.3	100.2	100.0	100.4	98.7	95.9	100.6	100.7	100.8	100.5	101.9	99.8	103.2
Dec-20	99.0	97.2	100.2	100.1	100.3	100.0	100.7	101.3	100.2	100.1	97.7	101.8	102.4	103.6	101.2	102.8	101.1	103.8

Base: 2020 = 100

Zone	Central			Dar es Salaam			Lake			Northern			South Eastern		Southern Highlands			
	Headline	Food	Non-food	Headline	Food	Non-food	Headline	Food	Non-food	Headline	Food	Non-food	Headline	Food	Non-food	Headline	Food	Non-food
New weights (%)	100.0	27.7	72.3	100.0	23.1	76.9	100.0	29.9	70.1	100.0	30.2	69.8	100.0	33.7	66.3	100.0	27.0	73.0
Jan-21	100.7	98.5	101.5	101.5	100.4	101.8	101.9	100.8	102.3	100.8	97.7	102.2	101.1	102.2	100.6	103.3	104.9	102.7
Feb-21	101.0	99.3	101.6	102.1	102.0	102.1	103.4	103.4	103.3	101.4	99.1	102.4	102.5	104.1	101.7	104.3	107.0	103.3
Mar-21	101.6	100.4	102.1	102.5	103.0	102.3	104.7	105.1	104.6	103.0	101.1	103.9	103.7	105.9	102.6	105.0	108.7	103.7
Apr-21	101.4	101.1	101.5	103.0	103.7	102.8	103.9	104.5	103.7	103.8	80.5	113.9	104.0	106.1	103.0	105.3	107.9	104.3
May-21	101.7	101.5	101.8	102.8	103.4	102.6	105.1	106.3	104.6	104.0	81.7	113.7	104.7	108.1	103.0	105.6	109.4	104.2
Jun-21	101.7	101.3	101.9	102.9	103.3	102.8	106.1	109.1	104.7	104.3	82.7	113.7	105.1	107.8	103.7	105.6	109.2	104.3
Jul-21	101.2	99.5	101.8	102.8	102.8	102.9	107.2	112.3	105.0	103.9	104.3	103.7	105.1	107.5	103.9	105.5	108.8	104.3
Aug-21	100.5	96.0	102.2	102.2	100.1	102.9	106.8	109.6	105.6	103.0	101.9	103.4	105.3	105.8	105.0	104.9	105.8	104.6
Sep-21	100.4	96.1	102.0	102.4	101.0	102.9	106.7	109.3	105.6	102.5	100.8	103.2	105.0	105.0	105.0	105.1	105.4	104.9

Source: National Bureau of Statistics

Note: September 2019 to December 2020 CPIs have been revised



Consolidated Zonal Economic Performance Report

**Annex 4: Zonal Consumer Price Index – Twelve-Month Percentage Change**

Base: December 2015 = 100

Zone	Central			Dar es Salaam			Lake			Northern			South Eastern			Southern Highlands		
	Headline	Food	Non-food	Headline	Food	Non-food	Headline	Food	Non-food	Headline	Food	Non-food	Headline	Food	Non-food	Headline	Food	Non-food
Weights (%)	100.0	41.5	58.5	100.0	26.3	73.7	100.0	40.7	59.3	100.0	40.6	59.4	100.0	48.4	51.6	100.0	41.4	58.6
Dec-19	1.1	4.0	-0.8	3.9	10.0	1.5	4.0	5.5	2.9	3.7	4.7	3.1	5.0	5.9	4.3	3.4	3.6	3.3
Jan-20	1.5	2.5	0.9	3.8	9.2	1.6	4.0	5.2	3.2	3.3	4.5	2.4	4.9	5.3	4.5	3.4	3.5	3.3
Feb-20	1.0	2.7	-0.1	4.5	9.6	2.5	2.8	2.1	3.3	2.6	3.2	2.3	6.0	7.6	4.5	1.9	4.0	0.7
Mar-20	1.1	2.0	0.5	5.1	8.5	3.7	0.9	-0.5	1.8	1.1	2.1	0.4	5.6	9.1	2.4	3.5	4.2	3.1
Apr-20	1.0	1.0	1.0	3.9	5.5	3.2	1.1	-0.6	2.2	2.0	1.5	2.4	5.8	9.4	2.6	4.4	4.9	4.2
May-20	1.8	1.1	2.3	2.4	3.4	2.0	0.9	0.9	0.9	3.7	2.4	4.7	6.0	9.5	2.9	5.1	6.0	4.6
Jun-20	2.1	0.7	3.0	2.2	3.4	1.7	1.6	0.8	2.2	2.5	-1.2	5.2	6.8	10.7	3.3	5.9	6.2	5.8
Jul-20	2.5	1.5	3.2	3.0	4.0	2.5	0.6	-1.1	1.8	2.0	-2.0	4.9	7.7	13.0	3.1	6.4	6.3	6.5
Aug-20	2.9	2.4	3.2	3.8	6.3	2.8	-0.4	-3.1	1.6	1.3	-3.5	4.8	7.9	13.7	2.8	5.9	5.1	6.3
Sep-20	1.6	1.8	1.5	4.3	8.3	2.7	0.0	-3.1	2.1	1.6	-3.8	5.4	6.4	11.3	2.2	6.0	5.9	6.1
Oct-20	0.6	0.4	0.8	3.0	4.4	2.4	1.0	-0.9	2.5	1.2	-2.6	3.9	7.5	13.2	2.6	8.2	6.8	9.1
Nov-20	-0.6	-3.3	1.2	2.9	3.9	2.4	1.2	-0.5	2.5	0.8	-4.0	4.3	8.0	13.8	3.0	7.4	5.4	8.6
Dec-20	0.6	-1.8	2.2	2.0	2.1	1.9	1.4	-0.1	2.5	2.4	-1.9	5.4	7.7	13.1	3.1	7.4	5.7	8.5

Base: 2020 = 100

Zone	Central			Dar es Salaam			Lake			Northern			South Eastern			Southern Highlands		
	Headline	Food	Non-food	Headline	Food	Non-food	Headline	Food	Non-food	Headline	Food	Non-food	Headline	Food	Non-food	Headline	Food	Non-food
New weights (%)	100.0	27.7	72.3	100.0	23.1	76.9	100.0	29.9	70.1	100.0	30.2	69.8	100.0	33.7	66.3	100.0	27.0	73.0
Jan-21	2.0	-0.9	3.3	3.2	1.3	3.9	2.4	-0.6	4.2	2.7	-2.4	5.5	5.7	10.2	2.2	7.5	8.3	7.3
Feb-21	1.4	-1.4	2.8	2.3	1.3	2.8	3.4	2.2	4.2	2.6	-1.9	5.2	4.9	8.5	2.4	8.2	9.8	7.8
Mar-21	0.6	-1.7	1.8	1.2	1.2	1.3	5.1	5.6	4.7	3.8	-0.3	6.3	4.7	6.7	3.7	6.6	9.5	5.6
Apr-21	-0.1	-1.8	0.9	2.7	4.2	2.1	3.5	3.9	3.5	3.1	-21.1	14.2	3.8	5.6	2.9	5.4	7.2	4.9
May-21	-0.2	-1.7	0.7	3.1	4.0	2.8	4.3	4.2	4.6	1.7	-21.2	12.2	4.0	7.6	2.1	5.0	7.3	4.5
Jun-21	0.4	0.1	0.5	3.4	3.7	3.3	4.9	7.3	4.0	2.5	-19.2	12.2	3.7	5.8	2.9	4.7	7.0	4.2
Jul-21	0.0	-1.6	0.6	2.8	3.6	2.5	7.4	13.5	4.6	2.8	3.2	2.7	3.3	3.9	3.7	4.8	7.6	3.9
Aug-21	-0.2	-4.2	1.2	2.1	1.0	2.4	8.0	12.7	5.5	2.6	2.5	2.4	4.4	3.8	5.1	4.9	6.1	4.4
Sep-21	1.5	-1.9	2.5	1.7	-0.3	2.3	7.6	12.6	5.0	2.7	3.1	2.0	5.1	5.0	5.1	4.9	5.9	4.4

Source: National Bureau of Statistics



Consolidated Zonal Economic Performance Report

**Annex 5: Agent Banking Transactions in Tanzania Mainland and Zanzibar**

Region	Quarter ending														
	Sep-20			Dec-20			Mar-21			Jun-21			Sep-21 <sup>P</sup>		
	Number of agents	Value (Millions of TZS)		Number of agents	Value (Millions of TZS)		Number of agents	Value (Millions of TZS)		Number of agents	Value (Millions of TZS)		Number of agents	Value (Millions of TZS)	
	Cash deposit	Cash withdrawal		Cash deposit	Cash withdrawal		Cash deposit	Cash withdrawal		Cash deposit	Cash withdrawal		Cash deposit	Cash withdrawal	
Arusha	3,389	416,317.9	133,978.7	3,542	452,097.8	139,783.2	3,800	453,839.8	132,460.6	3,928	610,944.0	141,147.1	4,148	841,700.7	201,411.8
Coast	883	142,593.6	62,108.2	917	153,337.5	63,959.9	990	160,022.3	62,169.9	1,033	190,144.3	65,795.1	1,060	248,815.7	95,259.3
Dar es Salaam	12,218	1,385,753.4	522,577.1	12,753	1,530,438.4	562,788.9	13,759	1,525,989.6	535,952.2	14,216	2,305,828.5	594,411.2	15,285	2,954,081.2	916,290.2
Dodoma	2,119	305,637.4	122,641.8	2,208	318,963.9	124,895.6	2,409	298,317.7	114,603.4	2,497	439,807.9	131,371.2	2,659	539,042.3	187,333.2
Geita	463	220,803.0	60,223.6	517	237,029.5	64,574.5	556	221,934.7	64,505.5	599	312,035.0	78,929.2	636	388,380.4	100,622.7
Iringa	971	175,848.2	84,685.9	1,060	194,059.5	87,046.1	1,155	174,825.4	74,400.3	1,198	271,038.6	82,098.2	1,205	324,529.7	115,907.3
Kagera	903	278,011.3	93,784.9	950	259,337.4	80,355.0	1,009	261,196.4	75,822.1	1,046	393,336.2	73,621.4	1,054	504,181.6	104,304.4
Katavi	117	54,735.6	27,747.8	136	50,124.3	19,742.6	161	40,719.1	15,535.0	180	54,386.4	21,075.3	198	74,561.2	33,425.7
Kigoma	431	136,223.4	39,088.2	481	143,464.3	39,842.1	511	139,183.6	39,802.7	571	178,090.1	41,262.7	580	236,283.6	56,190.9
Kilimanjaro	1,581	198,250.1	62,513.7	1,597	226,020.0	72,589.3	1,696	248,750.6	69,460.9	1,770	310,472.4	70,884.9	1,851	419,364.6	96,418.8
Lindi	454	86,864.0	62,358.2	490	102,567.9	78,969.1	564	79,408.1	35,775.4	594	84,190.6	33,484.2	611	135,343.9	76,395.2
Manyara	465	100,468.2	49,717.4	485	125,767.7	55,669.5	520	105,425.5	50,362.0	536	136,845.8	61,274.9	544	211,880.3	101,293.1
Mara	793	173,120.6	60,348.1	836	175,843.7	50,965.1	901	176,469.4	49,734.2	939	205,104.9	52,250.2	918	269,824.6	72,650.7
Mbeya	2,054	370,211.3	142,981.0	2,079	395,367.5	151,114.8	2,228	362,555.1	133,607.0	2,344	456,865.5	151,663.0	2,410	612,443.9	209,507.3
Morogoro	1,763	282,092.5	132,391.2	1,816	312,893.8	136,332.6	1,957	301,939.5	123,012.2	2,054	386,368.6	121,776.1	2,139	522,012.8	199,487.5
Mtwara	737	116,851.4	59,586.9	786	168,022.8	116,868.3	861	124,527.1	52,697.0	907	132,804.3	42,617.4	939	186,327.6	72,572.5
Mwanza	2,988	422,413.2	143,837.1	3,078	413,094.2	139,466.8	3,250	399,762.8	137,318.5	3,415	604,866.4	159,240.4	3,518	749,381.2	215,500.3
Njombe	763	170,923.5	85,283.5	803	190,773.7	93,980.8	884	165,914.8	79,032.5	935	244,201.3	87,325.8	958	312,244.1	128,904.1
Rukwa	393	73,120.3	28,354.6	421	70,242.8	27,570.4	473	69,181.2	28,529.0	475	100,370.9	33,338.0	167	121,330.1	44,014.0
Ruvuma	576	151,036.7	71,422.5	633	162,889.3	83,441.2	724	134,631.2	58,743.4	784	189,026.7	59,853.2	474	282,544.3	102,150.2
Shinyanga	987	298,169.2	100,777.3	1,026	325,430.2	103,543.9	1,083	322,990.8	104,514.7	1,176	552,864.6	128,222.0	852	708,957.2	170,412.5
Simiyu	321	56,814.0	22,971.6	336	64,322.1	24,303.2	357	55,940.0	23,023.8	374	62,869.5	22,303.0	1,150	87,574.5	29,120.6
Singida	482	90,679.9	33,203.9	503	99,603.6	31,105.5	546	85,883.8	27,184.6	576	124,168.6	33,431.0	393	183,879.4	61,446.6
Songwe	387	171,071.5	55,465.0	408	173,115.1	57,224.1	458	154,649.2	47,741.8	512	200,531.4	56,680.5	587	299,827.0	92,741.9
Tabora	815	136,160.1	53,716.4	866	145,537.2	55,109.2	927	124,205.8	51,980.3	979	183,323.8	64,828.7	575	250,099.8	101,702.9
Tanga	874	165,395.1	55,620.4	941	192,420.3	59,256.2	999	197,115.5	61,539.5	1,048	272,937.7	65,503.2	964	332,396.1	89,228.3
Pemba	96	11,372.0	4,987.2	100	11,733.7	3,590.5	118	14,453.3	5,766.5	130	15,826.6	6,680.8	1,042	32,604.6	16,772.7
Unguja	660	57,033.9	22,554.2	642	69,400.4	24,187.0	695	89,854.2	26,174.6	716	105,698.5	32,526.2	827	131,934.7	44,683.0
<b>Total</b>	<b>37,927</b>	<b>6,179,565.7</b>	<b>2,367,384.9</b>	<b>39,668</b>	<b>6,682,764.5</b>	<b>2,520,497.9</b>	<b>43,591</b>	<b>6,489,686.5</b>	<b>2,281,449.6</b>	<b>45,532</b>	<b>9,124,949.2</b>	<b>2,513,594.9</b>	<b>47,744</b>	<b>11,961,547.3</b>	<b>3,735,747.9</b>

Source: Bank of Tanzania

Note: p denotes provisional data



Consolidated Zonal Economic Performance Report

**Annex 5a: Value of Selected Manufactured Commodities by Zone and Type**

<b>South Eastern Zone</b>				<b>Dar es Salaam Zone</b>			
Commodity	Millions of TZS			Commodity	Millions of TZS		
	Quarter ending				Quarter ending		
	Sep-20	Jun-21	Sep-21		Sep-20	Jun-21	Sep-21
Rolled steel	71,721.8	96,585.4	102,181.3	Wheat flour	205,968.09	154,911.06	196,016.44
Cement	71,485.0	73,673.9	88,757.9	Cement	156,660.66	153,574.35	179,265.15
Ceramics	64,455.4	64,496.1	86,555.7	Bottled beer	89,955.12	83,632.54	123,228.59
Soft drinks	56,755.3	66,960.3	85,937.6	Vegetable oils and fats	136,505.17	48,381.36	120,313.57
Washing powder	31,999.0	21,853.3	24,774.0	Soap and laundry / toilet detergent	111,053.87	42,804.71	118,417.93
Gypsum board	8,941.8	12,107.2	15,363.9	Rolled steel	51,162.3	94,654.7	115,302.8
Shoes	7,567.4	13,251.9	12,521.7	Cigarettes	89,047.40	84,107.55	98,426.26
Salt	8,712.3	8,898.7	10,558.4	Corrugated Iron sheets	97,370.87	102,512.66	90,784.10
Diapers	8,296.6	7,995.2	8,257.7	Soft drinks	74,841.26	89,458.20	83,235.18
Plastic articles	4,060.8	6,531.0	6,285.0	Paints	38,970.96	45,397.25	52,319.94
Corrugated iron sheets	9,849.8	5,245.5	1,773.7	Spirits	47,256.39	66,587.25	49,149.73
Sodium silicate	1,391.4	1,493.5	1,493.5	Foam mattresses	31,243.84	41,061.60	48,071.64
Nail	1,196.0	641.5	1,308.2	Plastic articles	48,057.31	56,292.39	44,053.51
Packaging material	811.3	354.4	773.0	Glass	33,102.77	54,587.07	43,493.97
Gypsum powder	401.4	820.0	739.0	Woven fabrics	5,455.33	8,298.43	10,201.11
Electrical cable	25,655.9	17,130.7	478.4	Standardized milk	1,655.98	1,430.19	1,738.78
Transformer	643.0	359.8	478.4	Others	124,378.73	203,079.56	151,758.16
Leather	40.0	45.0	45.0	<b>Total</b>	<b>1,342,686.0</b>	<b>1,330,770.9</b>	<b>1,525,776.8</b>
Instant coffee	10.3	16.4	22.5				
<b>Total</b>	<b>373,994.7</b>	<b>398,459.7</b>	<b>448,305.0</b>				

Source: National Bureau of Statistics and Respective Industries



Consolidated Zonal Economic Performance Report

**Annex 5b: Value of Selected Manufactured Commodities by Zone and Type**

<b>Lake Zone</b>				<b>Central Zone</b>			
Millions of TZS				Millions of TZS			
Commodity	Quarter ending			Commodity	Quarter ending		
	Sep-20	Jun-21	Sep-21		Sep-20	Jun-21	Sep-21
Beer	45,401.0	52,205.8	47,671.1	Sugar	112,772.2	38,129.5	147,305.2
Sugar	36,693.3	18,921.5	43,769.0	Tobacco, cured	25,409.3	11,988.2	26,679.8
Soft drinks	33,424.4	35,354.7	36,007.1	Vegetable oils and fats	10,886.7	16,151.6	20,251.0
Vegetable oils and fats	13,424.8	6,649.0	16,873.2	Milled rice	8,679.0	10,731.5	14,212.0
Foam mattresses	10,337.2	7,943.2	11,618.4	Knitted fabrics	14,374.2	10,907.2	11,538.0
Rolled steel	5,465.7	4,924.6	3,562.3	Textile bags	1,228.8	1,141.0	1,237.1
Coffee	2,212.4	771.9	883.1	Canvas	883.8	822.7	928.0
Milk	716.6	259.0	752.5	Plastic articles	632.2	182.3	465.3
Timber	114.3	1,337.8	120.0	Wine	486.1	497.5	417.2
Tea	44.4	201.1	108.4	Standardized milk	348.0	316.5	365.4
<b>Total</b>	<b>147,834.2</b>	<b>128,568.5</b>	<b>161,365.1</b>	<b>Others</b>	<b>396.5</b>	<b>11,540.6</b>	<b>9,850.8</b>
				<b>Total</b>	<b>176,097.0</b>	<b>102,408.6</b>	<b>233,249.8</b>

Source: National Bureau of Statistics and Respective Industries



Consolidated Zonal Economic Performance Report

**Annex 5c: Value of Selected Manufactured Commodities by Zone and Type**

<b>Southern Highlands Zone</b>				<b>Northern Zone</b>			
Millions of TZS				Millions of TZS			
Commodity	Quarter ending			Commodity	Quarter ending		
	Sep-20	Jun-21	Sep-21		Sep-20	Jun-21	Sep-21
Soft drinks (soda)	93,043.3	89,445.3	80,103.4	Beverages	71,916.9	80,369.5	80,714.3
Beer	62,013.7	46,498.4	66,114.4	Cement	57,955.7	62,482.3	65,267.6
Cement	30,465.6	20,341.4	29,229.0	Sugar	57,663.4	85,009.8	60,925.4
Made (Black) tea	21,987.9	28,952.8	23,087.4	Textiles	50,657.8	34,752.8	36,494.7
Paper craft	14,520.7	13,907.8	16,246.7	Food products	35,951.8	21,833.0	34,480.3
Canned fruits and vegetable	-	-	5,135.3	Rolled steel	10,180.4	15,101.8	15,226.3
Pyrethrum	3,734.8	3,548.0	3,821.5	Electrical goods	13,258.4	10,011.3	13,894.1
Bottled mineral water	1,888.6	2,773.6	2,773.6	Mattresses	6,146.2	8,938.0	12,203.2
Processed milk	951.9	614.8	2,171.9	Coffee and tea products	7,911.6	26,598.1	9,684.3
Wattle extracts	1,200.5	1,775.7	1,684.0	Soap and toilet detergents	4,606.9	5,444.3	4,837.3
Others	20,488.6	19,283.9	24,859.8	Others	21,985.8	39,216.8	37,565.3
<b>Total</b>	<b>250,295.6</b>	<b>227,141.6</b>	<b>255,227.0</b>	<b>Total</b>	<b>338,235.1</b>	<b>389,757.9</b>	<b>371,292.7</b>

Source: National Bureau of Statistics and Respective Industries